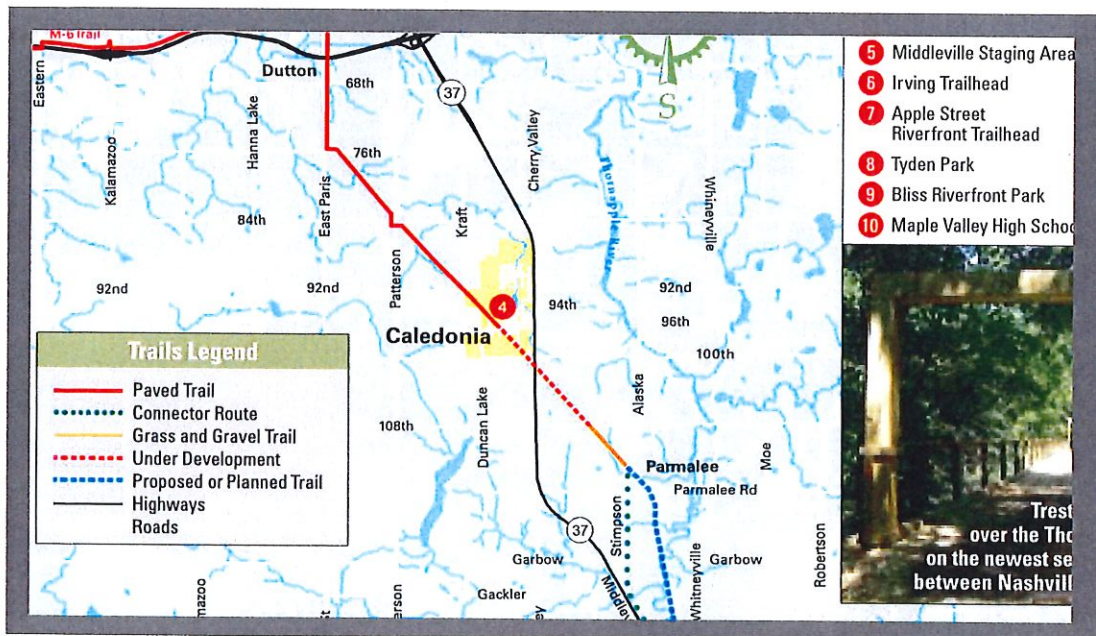


BARRY COUNTY REQUEST FOR PROPOSAL

PAUL HENRY LINEAR TRAIL

DECEMBER 12, 2017



WIGHTMAN & ASSOCIATES, INC.

ARCHITECTURE • ENGINEERING • LANDSCAPE ARCHITECTURE • SURVEYING • ENVIRONMENTAL • ENVIRONMENTAL



PRIMARY CONTACT
BEN BAKER
bbaker@wightman-assoc.com
(269) 487-9611

December 11, 2017

Barry County
220 W. State Street
Hastings, MI 49058

Attention: Michael Brown, County Administrator

RE: PAUL HENRY LINEAR TRAIL

Benton Harbor Office:
2303 Pipestone Road
Benton Harbor, MI 49022

Telephone:
(269)927-0100

Fax:
(269)927-1300

Website:
www.wightman-assoc.com

Dear Michael:

Thank you for the opportunity to submit this proposal for the Paul Henry Linear Trail. We believe people flourish when they partner with a dynamic team of problem solvers. Wightman & Associates has delivered first-class Architecture, Engineering and Survey solutions to a diverse collection of clients since 1946. Because of our diverse professional backgrounds, varied project exposure, broad experience, and continuing education we can craft the right team for each unique client. Outstanding client service is our culture. Becoming trusted advisors and true partners guides our actions. We have outlined our scope of services and fee proposal in this document and are also attaching resumes of key personnel and similar project experience.

Section I – Project Goals

Wightman and Associates has worked with many communities on all phases of trail design, funding and construction. We are excited to hear that Barry County is ready to begin the planning process for this portion of the trail. Fortunately, the Thornapple Trail Association has a master plan for this trail, and the County already owns the former railroad right of way for this section of trail. Based on our phone conversation we understand that the County is looking for preliminary design options and cost estimates so they can seek funding and develop the portion of the trail from 108th Street to Stimson Road.

Section II – Scope of Services

We propose that the County begin this project by pursuing grant opportunities from Michigan Department of Transportation (MDOT) Transportation Alternatives Program (TAP) and Michigan Department of Natural Resources (MDNR) Michigan Natural Resources Trust Fund (MNRTF). The MDOT TAP grant application may be submitted at any time with approval on a quarterly basis. MDNR MNRTF grant application is due on April 1st of each year; MDOT funding should have conditional commitment or preapproval prior to submission to the DNR. The additional acquisition and development of the Paul Henry Thornapple Trail is listed as a goal in Barry County's 5 year recreation plan, which is a requirement of applying for MNRTF Grants.

The funding phase includes the following tasks:

- Set up an account on MIRecGrants and MiLogin online
- Prepare Grant Application forms and supporting exhibits
- Prepare site development plans, location maps, and typical trail cross section
- Provide a construction cost estimate for the project
- Set up a public meeting

- Create and approve resolution to support project
- Gather documents and upload to appropriate agency sites
- Arrange photographs and photo location map
- Gather input for Universal Design
- Gather expert documentation for the site
- Gather deeds, easements, and property descriptions for the land/easement/lease acquisition process
- Coordinate tasks and forwarding/uploading documents among stakeholders

The County will provide the majority of the paperwork for both application submittals. Wightman will work with the County to provide a site development plan and trail cross section, construction estimate, maintenance recommendations and cost, and environmentally friendly items.

If so desired, Wightman will serve as the County's liaison and spearhead the organizational effort for the project as well as provide the majority of the services listed above with some assistance from the County.

Wightman and Associates is a full service design firm with the experience to continue the design and construction documents as the project moves beyond the funding phase.

Section III - Fees

We propose to complete the above Scope of Services for a fixed fee of \$2,000 plus reimbursable expenses. If the County would like us to spearhead the funding application process to MDOT and MDNR we propose a fixed fee of \$7,000 plus reimbursable expenses.

You should budget an additional 4% to 6% of the fee listed above for reimbursable expenses.

If the County would like a fee proposal for the further development of design and construction documents, topographic survey, bidding and permitting, and construction phase services we would be happy to provide a proposal for those services.

Section IV – Schedule

We can begin work immediately upon receipt of a signed professional services agreement.

We are extremely excited by the opportunity to partner with you on this project. If our proposal is acceptable to you, please sign below to authorize us to begin work and return a copy to our office. If you have any questions or comments, please feel free to call me.

Very truly yours,

WIGHTMAN & ASSOCIATES, INC.

BEN BAKER

Ben Baker, ASLA, LEED AP
bbaker@wightman-assoc.com

Additional Information

Firm Information

We believe people flourish when they partner with a dynamic team of problem solvers.

OUR STORY

Wightman & Associates has delivered first-class Architecture, Engineering and Survey solutions to a diverse collection of clients since 1946. During this tenure, we've earned the trust of our clients to become one of the most prominent firms in the region.

We work with people, committees, and communities to **discover culture, enhance community and celebrate people** with sustaining and balanced design solutions. Our approach leads to places where people are happy, healthy and connected. Understanding people and their culture allows us to help clients clarify missions and calibrate solutions that bring efficiency and fun to what they do.

Outstanding client service is our culture. Becoming trusted advisors

WIGHTMAN EXPERTISE:

One Team:

Landscape Architecture
Architecture
Planning
Engineering
Surveying
Construction Administration
Inspection
Facility Assessment

Additional In-House Capacity:

Urban Design
G.I.S.
Environmental
Interior Design

OUR TEAM

To deliver our firm's mission, Wightman & Associates is composed of an interdisciplinary team of more than 100 professionals. Diverse backgrounds, varied project exposure, broad experience and continuing education ensures that we have the tools to craft the right team for each unique client.

WHY WIGHTMAN:

- **Place**-based planners and designers. Lifestyle Focused.
- **Strategic** Creativity in abundance. Big picture thinking. Action Focused.
- Portfolio of solutions aligns with your needs. **Focused on** the unique solutions for your project.
- **Process:** engage, listen, understand, educate and then provide options.
- **Partners**, not simply consultants. **Team.** Team. Team.

As the scope of the project is refined, additional team members will be utilized from our staff of 120+ professionals to best accommodate your project's specific needs.



WIGHTMAN & ASSOCIATES, INC.
AMERICAN COUNCIL OF ENGINEERING COMPANIES

★ **FIRM OF THE YEAR** ★

Firm Information

Structure:

Sub-S Corporation (Michigan)
Matt A. Davis, P.E., President (mdavis@wightman-assoc.com)
Mickey E. Bittner, P.E., Treasurer (mbittner@wightman-assoc.com)
Steve C. Carlisle, P.E., Secretary (scarlisle@wightman-assoc.com)
Brian Lieberg, P.S., Director (blieberg@wightman-assoc.com)
Greg Monberg, AIA, Director (gmonberg@wightman-assoc.com)
Alan Smaka, P.E., Chairman, (asmaka@wightman-assoc.com)

Office Locations

264 Western Avenue Allegan, MI 49010 (269) 673-8465 Fax: (269) 927-1300	9835 Portage Road Portage, MI 49002 (269) 327-3532 Fax: (269) 927-1300	2303 Pipestone Road Benton Harbor, MI 49022 (269) 927-0100 Fax: (269) 927-1300
--	---	---

Web: www.wightman-assoc.com

Social Media: <https://www.facebook.com/Wightman-Associates-Inc>
<https://www.linkedin.com/company/wightman-&-associates-inc->

Background:

Wightman and Associates, Inc. (WAI) has spent **over 70 years** providing the level of services that has earned the trust of our clients and helped us to become one of the most prominent engineering, surveying and architectural firms in the Midwest. Our employee-owned company provides practical solutions based on common sense for all levels of civil engineering, surveying, and architectural projects.

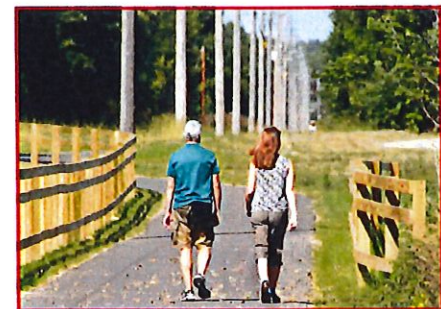
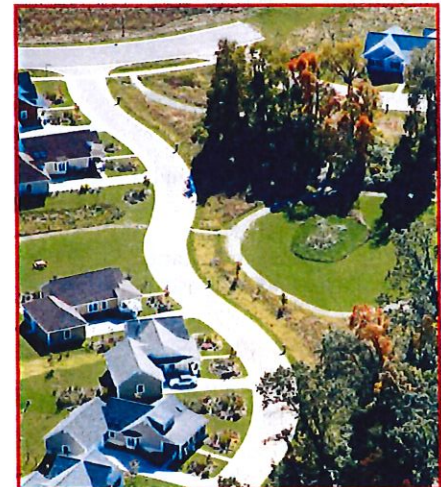
Staff:

WAI employs a continuously expanding team of professionals licensed to provide services in several states. Technical, surveying, inspection and support staff are trained to provide varying levels of expertise from the smallest daily survey tasks to the design and inspection of the largest municipal or private projects. Continuing education, varied project exposure and diverse professional backgrounds ensure that our clients will have a large pool of experts from which to draw.

History:

Our firm was established in 1946 by G. L. Wightman, civil engineer and surveyor. In 1971, our company became Wightman and Associates, Inc. We are an employee-owned company with more than 100 employees, including fourteen licensed engineers, five licensed architects, nine licensed surveyors, and twenty other professionals.

WAI has served as a consultant to all forms of public and private entities, including county, city, township, village, tribal governments, private developers, and industrial and commercial clients. Our engineering department specializes in planning, development and implementation of a wide variety of projects. WAI has gained a reputation for high quality, effective and economical consulting services and has a proven track record for development and implementation of real and usable projects. This is evidenced by the many long-term relationships with municipalities that we value, many of which are in excess of 20, 30 or even 40 years. These relationships are perpetuated with a primary client liaison who maintains open communication regarding funding opportunities, status of projects, and proactive planning recommendations.



**Geotechnical
Engineering Support from:
SME Engineering
2663 Eaton Rapids Road
Lansing, MI 48911-6310
517.887.9181
www.sme-usa.com**

WIGHTMAN & ASSOCIATES, INC.

Resumes

STEVE C. CARLISLE, P.E. PROJECT MANAGER



Mr. Carlisle serves as a Project Manager/Engineer with responsibility for analysis, design and construction management for both municipal and private engineering projects. His experience includes municipal streets and utilities, private subdivisions, municipal planning and parks and recreation facilities. He also has provided municipal bridge inspections and is experienced in AutoCAD.

Expertise

- Site Design
- Roads
- Wastewater Systems
- Water Systems
- Storm Sewers
- Private Development
- Construction Administration

Professional Registrations

- Professional Engineer
Michigan #48036
Illinois # 062-056103
- Construction Site Certified
Stormwater Operator
Michigan #C-03681
- Soil Erosion & Sedimentation
Control Certified #06-0567

Professional Training

- NHI Safety Inspection of
In-Service Bridges
- ASCE HEC-RAS

Professional Affiliations

- American Society of Civil Engineers

Professional Positions

- Wightman and Associates, Inc.
1997 - Present

Education

- B.S. Civil Engineering
Michigan State University 1997

Project Experience

Indiana Michigan River Valley Trail Project- Niles Charter Township Phase
Project Engineer for Phase I of the Niles Charter Township portion of the project. Project calls for trails to be constructed from the Indiana state line to Brandywine Creek Nature Park (just north of US12) in 2014. This project includes up to 5.1 miles of trails from the state line to the existing City of Niles' trail with additional spurs and possible alternate routes..

City of Bridgman, Lake Street Enhancement Project, Red Arrow
Highway to Church Street; MDOT Job #106004A and 106905A
Project Engineer for 0.6 miles of roadway and streetscape improvements including HMA milling and resurfacing, curb and gutter replacement, ADA sidewalk ramps, fire hydrant replacements, decorative stamped concrete sidewalks, LED street lighting, decorative benches, planters and trash receptacles, stamped concrete crosswalks, LED traffic signals with full span mast arm structure, plantings and elaborate block planters.

- **Kalamazoo County Road Commission: South Sprinkle and Comstock Avenue/Lake Street Intersection Improvements Project, MDOT Job # 78236A:**
Project Manager for right-of-way acquisition, design and construction engineering services for improvements to the S. Sprinkle Road and Comstock Avenue/Lake Street intersection. The project includes mast arms, LED signals, pedestrian LED signals with push-buttons, and video detection cameras and processor. The project also includes HMA cold milling and resurfacing, road reconstruction, addition of lanes, and road realignment with right-of-way acquisition along Comstock Avenue/Lake Street.

Cass County Road Commission: M-62 Non-Motorized Pathway Project, Cass County, MI
Project Manager for 3,650 ft. pathway that starts in the Village of Cassopolis and meanders along M-62 toward Dowagiac ending at the Cass County Law and Courts building. The 8 ft. concrete pathway is wide enough to accommodate all users, provides an excellent recreational opportunity, links four county buildings together reducing motorized trips and allows village residents to walk to the library and other services. The project was constructed utilizing Congestion Mitigation and Air Quality (CMAQ) funding through the Michigan Department of Transportation via the Cass County Road Commission.

- **Middle Crossing Pathway, City of Dowagiac, MI**
Project Manager for a nearly ½ mile off-street multi-use trail in the City of Dowagiac. This trail connects the City sidewalk network to Russom Field sports complex on the outskirts of town, where safe pedestrian access previously did not exist.

BEN BAKER, LLA, ASLA, LEED AP LANDSCAPE ARCHITECT



Mr. Baker is a talented registered Landscape Architect with over ten years experience in the field. He is highly organized with the ability to manage multiple projects, meet deadlines and stay within budget. He has a strong reputation as a clear and effective communicator. Mr. Baker has an affinity for park and recreation projects including trail design, playgrounds and parks.

Expertise

- Landscape Architecture
- Trails
- Planning
- Design

Professional Affiliations

- LEED Accredited Professional

Professional Registrations

- Licensed Landscape Architect
Michigan - 3901001536
Illinois - 157.001228
Indiana - LA21000135

Professional Positions

- Wightman & Associates, Inc.
2013 - Present
- President, Michigan Chapter of the American Society of Landscape Architects, 2015-Present
- Planning Commissioner, St. Joseph Charter Township, Berrien County, MI
2012-Present
- Abonmarche Consultants, Inc.
2010-2013
- Wolff Landscape Architecture, Inc.
2004-2010

Education

- Bachelor of Landscape Architecture with High Honors, Michigan State University

Project Experience

• Placemaking and Urban Design

Ben has worked on numerous projects relating to outdoor spaces. The relation of people to their outdoor environment is the key aspect of Landscape Architecture. Ben has extensive experience working in urban environments of all sizes, and knows how to design outdoor spaces that are functional and comfortable for the user. Ben is also very in tune with the Michigan Municipal League, and the Governor's Placemaking initiative - knowing that the quality of places, is important to a community's vitality.

• Indiana-Michigan River Valley Trail, Niles Charter Township, MI

Project designer for the layout of the 3.3 mile phase of the design running from the Indiana state line to the Brandywine Creek Nature Park in Niles Charter Township. The overall trail, when completed, will connect Niles, MI to Mishawaka, IN and travers 34 miles. This trail is a paved, off-street multi-use trail, utilized by walkers, runners, rollerbladers and bicyclists. WAI was recently hired by the township to begin development of the next 1.8 mile segment that will complete the Michigan portion of the trail.

• Middle Crossing Pathway, City of Dowagiac, MI

Project designer for a nearly ½ mile off-street multi-use trail in the City of Dowagiac. This trail connects the City sidewalk network to Russom Field sports complex on the outskirts of town, where safe pedestrian access previously did not exist.

• KL Avenue Trail, Oshtamo Township, MI

Project designer for a mile-long section of trail adjacent to KL Avenue in Oshtamo Township. This project includes coordination between the Township, Road Commission of Kalamazoo County, and MDOT and the replacement of a bridge on US 131. The project design is expected to conclude in early 2018 and then will seek grant funding.

The following projects are experience of Mr. Baker while working at a previous firm.

• Chicago Trails Plan, Chicago, IL

Project team member in creating a Master Plan for potential off-street shared use trails throughout Chicago. The secondary goal of this plan was to develop a "Chicago Trail Loop" path to allow users to traverse the City with limited street crossings. This document included over 300 pages discussing and prioritizing 36 potential trails. Each trail was described, including ROW availability, Engineering feasibility, land use compatibility, Cost and use estimates, and any potential fatal flaws. Many of the trails in this plan have been completed, including the highly publicized Bloomingdale (606) Line.

• Gary Green Link, Gary, IN

Team member in the development of an award winning ecological and recreational master plan for the Gary area. The plan proposed a thirty-mile loop trail within Gary that will link people to natural areas and other regional trails. This plan emphasized the regions natural resources and their potential for local recreation and eco-tourism. The City started implementing the plan in 2005 and have built a number of trail segments to date

• Kinzie Corridor Trail Plan, Chicago, IL

Worked on a conceptual level trail plan for a nearly 4-mile trail connecting Downtown Chicago to Garfield Park along a railroad corridor. This plan reviewed options to close appropriate areas of Kinzie street (which is a street in some locations and an alley in others) and convert areas to greenspace. This plan is helping to guide future development along this corridor.

Resumes

SUZANNAH M. DENEAU PROJECT ENGINEER



Ms. Deneau has more than 15 years of engineering experience. She provides structural engineering services for WAI in both engineering and architectural capacities. Ms. Deneau is familiar with all aspects of grant funding opportunities as well as AASHTO Guide for the Design of Bicycle Facilities. Ms. Deneau's role as structural engineer taps into her strength as a problem solver. She is able to thoroughly analyze a project and create solutions that are efficient and effective. Her engineering abilities on trail designs along with her leadership of the planning process ensure a quality end product for WAI's clients.

Expertise

- Trail Projects
- Structural Engineering
- Structural Evaluation
- Waterway & Bluff Restoration
- Concrete Design
- Steel Design
- Bridge Design
- Bridge Inspection

Professional Affiliations

- National Association of Women in Construction
- Precast/Prestressed Concrete Institute

Professional Training

- NHI Safety Inspection of In-Service Bridges
- ASCE HEC-RAS

Professional Registrations

- Construction Site Certified Stormwater Operator
Michigan #C-13204
- Soil Erosion & Sedimentation Control Certification
#06-0576

Professional Positions

- Wightman & Associates, Inc.
2006 – Present
- Byce & Associates, Inc. 2004 – 2005
- Wightman & Associates, Inc.
1999 – 2001

Education

- B.S. Architectural Engineering
Milwaukee School of Engineering, 2001

Project Experience

Indiana Michigan River Valley Trail Project- Niles Charter Township Phase I and II – Planning and Project Engineer for Phase I and II of the Niles Charter Township portion of the project. Project called for trails to be constructed from the Indiana state line to Brandywine Creek Nature Park (just north of US12) and is continuing north to the intersection of Fort and 3rd Streets. This project includes up to 5.1 miles of trails from the state line to the existing City of Niles' trail with additional spurs and possible alternate routes.

Antwerp Township Trail Project – Planning and Project Engineer for an east-west trail from the Village of Paw Paw to the Village of Mattawan through Antwerp Township. The project is in the planning stages, working with MDOT for access within 194 right-of-way and with MDOT and MDNR for funding of Phase I. The trail will be an off-road paved multi-use trail. Construction of Phase I is anticipated to begin in Spring, 2018.

City of Wayland Interurban Trail Project – Planning and project Engineer for seeking MDOT Transportation Alternatives Program and MDNR Michigan Natural Resources Trust Fund grant for the 1.2 mile section of Interurban Trail through the City limits. Coordination with Consumers Power has been successful, a long-term lease was secured, and engineer cost estimates were prepared. The project proposed additional parking and a restroom facility for trail and park users.

Glassman Park, New Buffalo Township – Project Engineer for securing a MDNR Land and Water Conservation Grant from the MDNR for development of the Township's twenty year old park. The park is bordered by the Galien River and a new canoe launch was designed as part of the project along with nature trails and site amenities.

Oselka Park, New Buffalo Township – Project Engineer for securing a MDNR Michigan Natural Resources Trust Fund grant for the acquisition of a parcel of property downstream of Glassman Park along the Galien River for the Township. The project will provide additional access to the river for kayakers, canoeists, fishermen, and nature enthusiasts.

CHRISTOPHER T. COWGILL, P.E.

PROJECT ENGINEER/CAD SPECIALIST



Mr. Cowgill uses his knowledge of AutoCAD Civil 3D to efficiently design and draft projects. His skillset has allowed him to successfully layout and produce construction documents for various municipal roadway and utility projects, as well as detailed site grading for private developments within tight deadlines and design constraints.

Expertise

- Road and Street Design
- Transportation Design
- Wastewater Collection Systems
- Storm Sewer Design
- Water Distribution Systems
- Roundabout Design
- Traffic Signal Design

Professional Registrations

- Professional Engineer
Michigan #6201057470
- Soil Erosion & Sedimentation
Control Certified #06-0570
- Construction Site Certified
Storm Water Operator
Michigan #C12434

Professional Positions

- Wightman & Associates, Inc.
2012 – Present
- Wightman Jones, Inc.
2008 – 2012
- Wightman & Associates, Inc.
2001 – 2008
- Allegretti Architects
1999 – 2001

Education

- B.S. Civil Engineering
Western Michigan University 2006

Project Experience

Recent Projects:

- City of Dowagiac – Commercial Street and Division Street Improvements Project – Streetscape project
- Four Winds South Bend Casino – Onsite utilities (water, storm, sanitary) and roadway/ parking layout/grading
- Berrien County Road Commission – Pipestone Road and Meijer Signal Improvements project – traffic signal, ada ramps
- City of Hartford – N. Center Street Improvements – Widening for center turn lane, 500 ft water main replacement, storm sewer improvements, ada ramps
- City of Buchanan – Front Street Improvements – road narrowing, mill and resurface, ada ramps, traffic signal
- City of Portage – Forest Drive Improvements – Roadway crush and shape, water main installation, ada ramps
- Van Buren County Road Commission – Red Arrow Highway Improvements – mill and resurface, ditching, storm sewer installation
- City of Hartford - S. Center Street Improvements – Widening for center turn lane, bike lanes, storm sewer improvements, ada ramps
- City of Albion - Water Main Extension
- Sky King Meadows (Subdivision)

Past Project Descriptions

Front Street Improvements Project, Red Bud Trail to the East City Limits, Buchanan, MI. The project included 0.60 mi of hot mix asphalt crushing, shaping and resurfacing, concrete curb and gutter, sidewalk and ADA ramps, storm sewer and drainage structure replacements, and pavement markings. The project also involved a traffic signal design including LED traffic signals, new mast arms, utility conduit design, and pedestrian push buttons and traffic signals.

Forest Drive Improvement Project, Lovers Lane to Portage Road, Portage, MI, MDOT Job #110407A 0.77 miles of roadway improvements including HMA base crushing and shaping, water main replacement, HMA surfacing, pavement markings, and restoration. Our design engineering services included planning, and topographical survey. The full construction engineering services included contract administration, full-time inspection, material testing, construction staking, and MDOT file documentation, including the management of the contract using Field Manager.

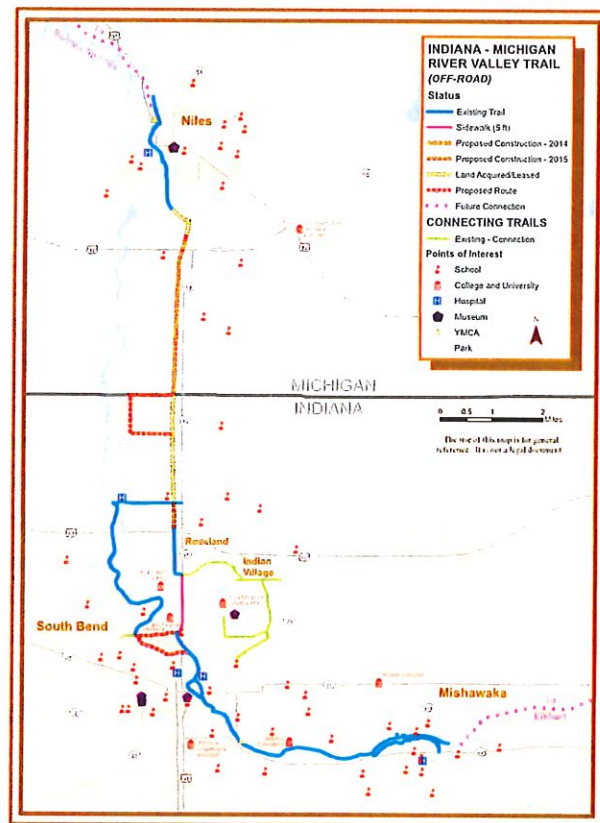
Portage Road (E. Centre to Romence Road) – City of Portage
Project Engineer for the resurfacing and widening of Portage Road from E. Centre Avenue to Romence Road. Approximately 2,500 feet of existing 4-lane roadway was widened to 5-lanes, with the rest of the roadway being milled and resurfaced. Work included new curb and gutter, HMA surfacing, relocation of catch basins, permanent pavement markings, permanent signing.

WIGHTMAN & ASSOCIATES, INC.

Example Projects

INDIANA-MICHIGAN RIVER VALLEY TRAIL

NILES CHARTER TOWNSHIP, MI



Client Reference:

Niles Charter Township
Harry Thibault, Director of
the Parks Commission
(269) 684-6467

Project Date: 2012-Present

Eng. prebid cost estimate: \$769,384.05

*Construction contract
award: \$766,263.40*

*Final construction contact
amount: \$746,441.33*

Services Provided:

- ◆ Trail Planning
- ◆ Construction Engineering
- ◆ Preliminary Engineering
- ◆ Surveying
- ◆ Design Engineering
- ◆ Construction Staking
- ◆ Grant Assistance

Staff Involved:

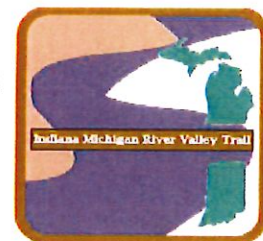
- ◆ Steve Carlisle, P.E.
- ◆ Suzannah Deneau
- ◆ Ben Baker, RLA

The Indiana-Michigan River Valley Trail is a 34-mile trail connecting Niles, MI to Mishawaka, IN. WAI provided design engineering, construction administration, and staking to assist Niles Charter Township with Phase I of their portion of the project from the Indiana state line to the Brandywine Creek Nature Park (just north of US12).

WAI worked with the partners in the project on the design of this 3.3 mile phase which officially opened on August 9, 2014. The design of the trail involved multiple funding sources including the Michigan Department of Transportation Enhancement and TAP grants and the Michigan Department of Natural Resources MNRTF grant. The project was designed in accordance with AASHTO's Guide for the Development of Bicycle Facilities including horizontal alignment and clearances, vertical alignment, permanent signs, pavement markings, and a signalized pedestrian crossing of 6 lanes at US-12.

Funding for the remaining 1.8 miles of trail in Michigan is being sought and advocates in Indiana are at work to make the connection to the state line. These two small segments are the remaining links to complete the project.

WAI is currently working on Phase II of this project which will complete the Michigan Portion of the trail. This 0.5 mile section travels through a heavily wooded preserve, crosses a stream with a pre-engineered metal bridge, and two road crossings including a flashing beacon crossing. This phase will go to bid in early 2018 and is expected to cost \$825,000.



Example Projects

MIDDLE CROSSING ROAD PATHWAY PROJECT

DOWAGIAC, MI



Client Reference:

City of Dowagiac
Mr. Kevin Anderson, (269) 782-2195

Engineers pre-bid estimate: \$90,977.50

Construction contract

award: \$103,011.62

Final Construction

Amount: \$100,159.35

Construction Date: 2014

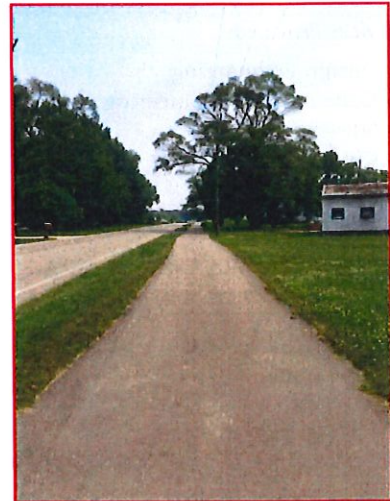
Services Provided:

- ◆ Design Engineering
- ◆ Full LAP Construction Engineering
- ◆ Surveying
- ◆ Construction Staking
- ◆ CMAQ Grant Assistance
- ◆ Right-of-way Acquisition

Staff Involved:

- ◆ Steve Carlisle, P.E.
- ◆ Ben Baker, LA
- ◆ Suzannah Deneau
- ◆ Jimmy Kahl

WAI was contacted by the City of Dowagiac to assist with applying and administering the CMAQ funding for a pathway along Middle Crossing Road in the City of Dowagiac. The path was developed to link the residential area of the downtown to Russom Park, which consists of several baseball, softball, and future soccer fields. The pathway starts at Prairie Ronde Avenue, and continues north to Russom Park a distance of approximately 0.5 miles. The pathway was constructed using aggregate base and a 3" HMA surface, with a width of 10', plus 2' shoulders on either side to satisfy the FHWA trail standards for this type of use. The project was funded through CMAQ and City match monies, and was administered following the MDOT Local Agency Programs requirements.



Example Projects

CASS COUNTY PATHWAY

CASS COUNTY, MI



Client Reference:

Cass County Road Commission
Mr. Joe Bellina,
Chief Engineer
(269) 445-8611

Project Date:

2011

Project Cost:

\$212,000

Services Provided:

- ◆ Design Engineering
- ◆ Construction Engineering
- ◆ Surveying
- ◆ Construction Staking
- ◆ Grant Assistance
- ◆ Right-of-Way Acquisition

Staff Involved:

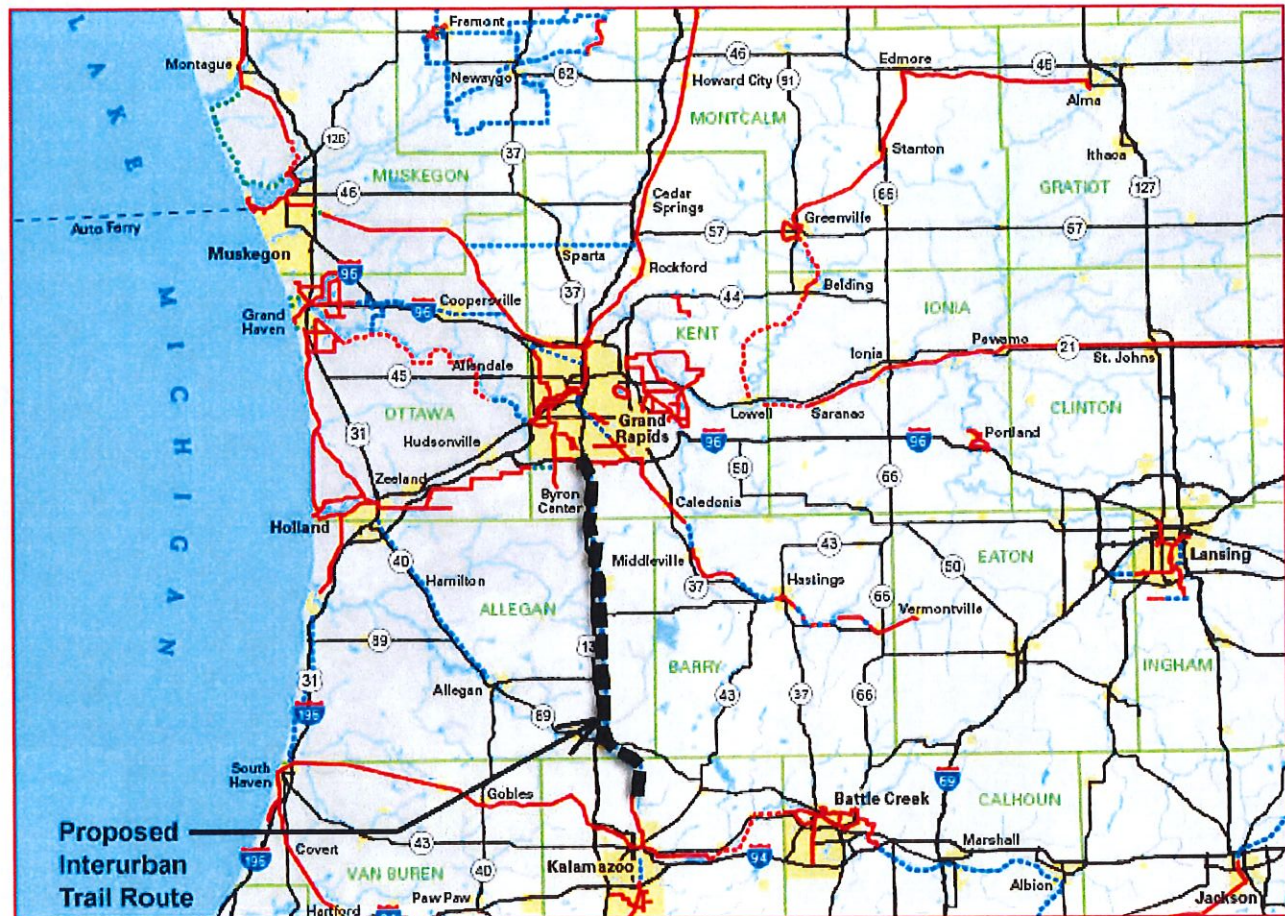
- ◆ Tom Deneau, P.E.
- ◆ Steve Carlisle, P.E.
- ◆ Dave Conn, E.I.T.
- ◆ Jim Kahl



WAI provided survey, design engineering, construction administration and construction staking for the M-62 Non-Motorized Pathway Project in Cass County. The pathway starts in the Village of Cassopolis and meanders approximately 3,650 ft. along M-62 toward Dowagiac ending at the Cass County Law and Courts building. The 8 ft. concrete pathway is wide enough to accommodate all users, provides an excellent recreational opportunity, links four county buildings together reducing motorized trips and allows village residents to walk to the library and other services. The project was constructed utilizing Congestion Mitigation and Air Quality (CMAQ) funding through the Michigan Department of Transportation via the Cass County Road Commission.

RIVER TO RIVER TRAIL PLANNING PROJECT

KALAMAZOO, ALLEGAN & KENT COUNTIES, MI



Client Reference:

West Michigan Transit Greenways
John Morrison, Executive Director
(616) 485-7805

Project Date: 2016-Present
Project Cost: \$56,000

Services Provided:

- ◆ Trail Planning
- ◆ Stakeholder Engagement
- ◆ Grant Assistance
- ◆ Preliminary Engineering

Staff Involved:

- ◆ Mickey Bittner, P.E.
- ◆ Steve Carlisle, P.E.
- ◆ Ben Baker
- ◆ Suzannah Deneau
- ◆ Ryan Miller
- ◆ April Kibby

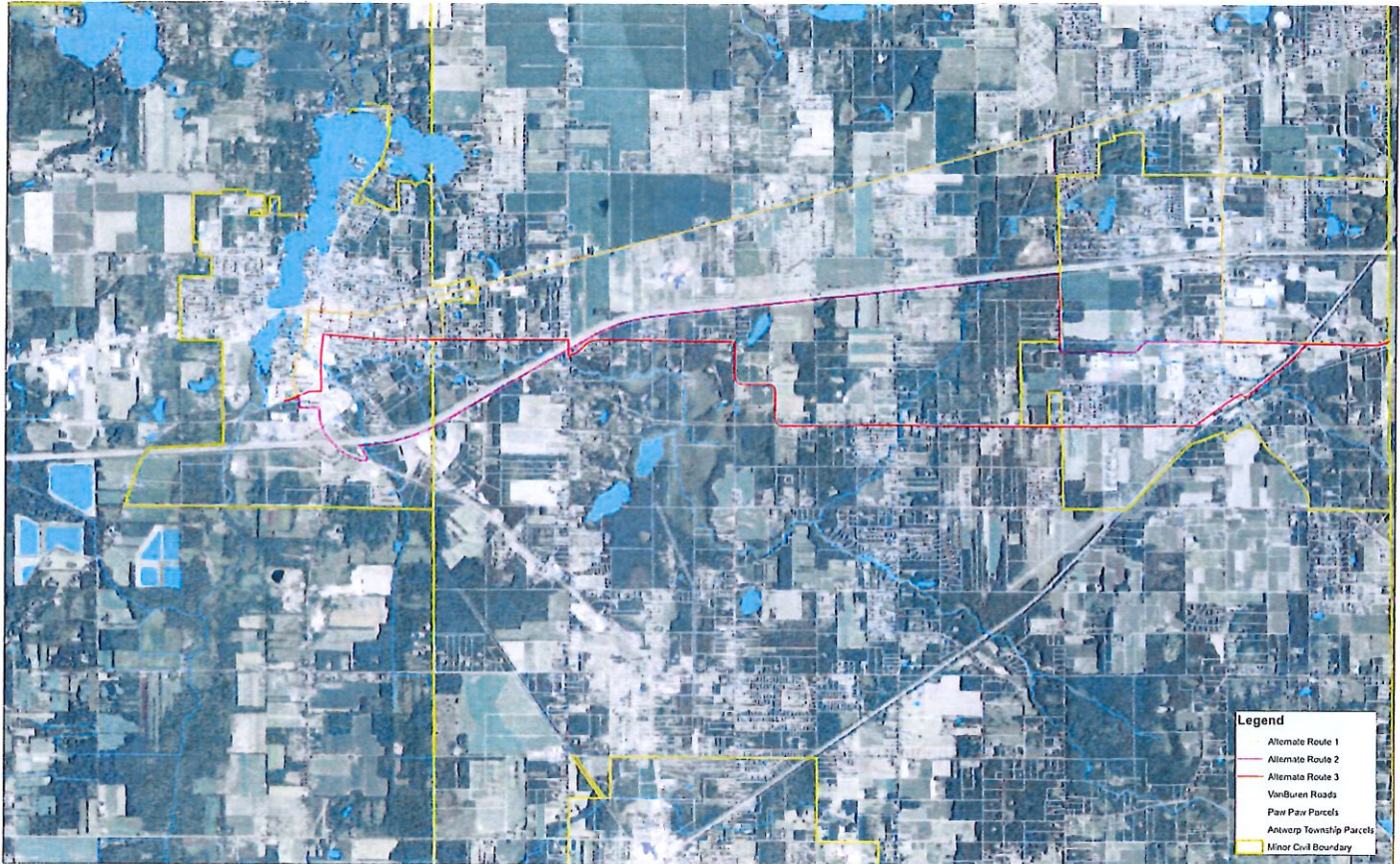
The River to River Trail is a 40-mile trail that will connect the Kalamazoo River Valley Trail with the Kent County Trail system and eventually to the Grand River Greenway Trail following the previously known Interurban Railroad line mostly owned by Consumers Energy. Thirteen communities have a stake in the Interurban Trail: Kalamazoo, Allegan, and Kent Counties; Cooper, Gun Plain, Martin, Wayland, Leighton, Dorr, and Byron Townships; the Cities of Plainwell and Wayland; and the Village of Martin. This is the fourth trail in the state to propose an alignment within MDOT interstate highway right of way.

This project is currently in the planning stages and we will be engaging stakeholders and partners to gather information regarding the proposed trails and routes. As a result of the planning process, an Interurban Trail Master Plan document will be developed for trail stakeholders and public outreach. This document will include maps, goals, stakeholders and partners, funding guidance, meeting minutes, and implementation. The second deliverable will be an online accessible database with the proposed trail route and amenities located near the trail including downtowns, parks, schools, etc.

Example Projects

ANTWERP TOWNSHIP TRAIL PROJECT

ANTWERP TOWNSHIP, MI



Client Reference:

Antwerp Township
Dan Ruziak, Supervisor
(269) 668-2615

Project Date: 2015-Present
Project Cost: \$2,600,000 (estimated)

Services Provided:

- ◆ Trail Planning
- ◆ Stakeholder Engagement
- ◆ Grant Assistance
- ◆ Preliminary Engineering

Staff Involved:

- ◆ Alan Smaka, P.E.
- ◆ Suzannah Deneau
- ◆ Sam Leach, E.I.T.

The Antwerp Township Trail Project is intended to connect the Villages of Mattawan and Paw Paw, then connecting the Fruitbelt Trail with the Texas Township trail system and is approximately 6 miles long. The project is currently in the planning stages and we are engaging stakeholders including Antwerp Township; the Village of Mattawan, the Village of Paw Paw, MDOT, MDNR, Paw Paw Conservation Group, local Boy Scout troops, and many others.

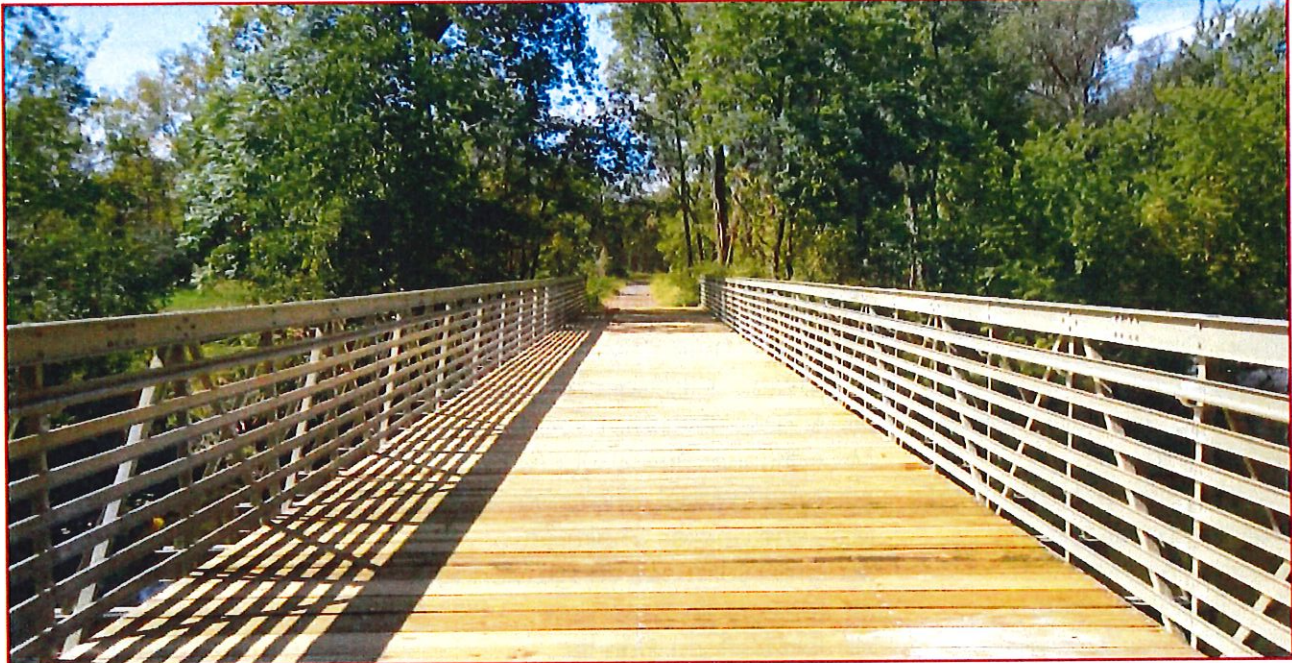
This project is the third trail in the state to propose an alignment within an MDOT Interstate Highway right of way. We have had numerous discussions with MDOT about this and they have been on-board with this concept to date.

We continue to work with the stakeholders on this project for submission for grants for design and construction as we prepare for 2018 construction of Phase I.

Example Projects

ALBION RIVER TRAIL PROJECT MDOT JOB NO. 73831A

ALBION, MI



Client Reference:

City of Albion
Mr. Jim Lenardson
Director of Public Services
(517) 629-5535

Project Date:
2007

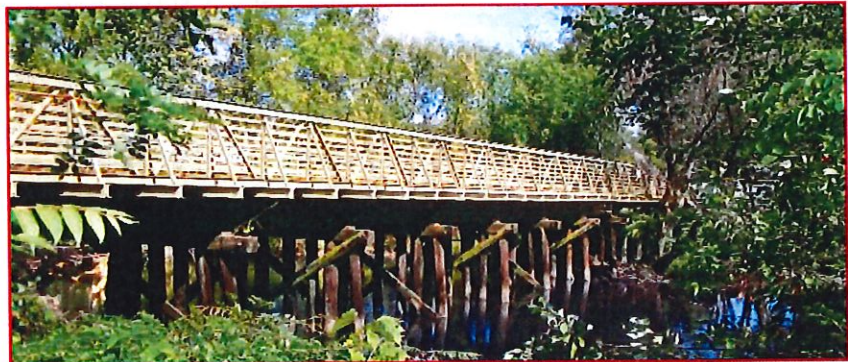
Project Cost:
\$790,000

Services Provided:

- ◆ Design Engineering
- ◆ Construction Engineering
- ◆ Surveying
- ◆ Construction Staking
- ◆ Grant Assistance
- ◆ Right-of-Way Acquisition

Staff Involved:

- ◆ Mickey Bittner, P.E.
- ◆ Christopher T. Cowgill, P.E.
- ◆ Gordon Karns, P.E.



Design, construction engineering and right-of-way acquisition services for 1.62 miles of a multi-use path along the Kalamazoo River in the City of Albion. This MDOT Enhancement Project included a minimum 10 ft.-wide concrete trail along residential areas and HMA trail at all other locations. The project also contained three 14 ft. clear pedestrian bridges, including the utilization of an abandoned 270 ft. railroad trestle.

During the design process, several bridge alternatives were presented to City staff and ultimately a Fiber Reinforced Plastic material was selected because of the low maintenance requirements and an aesthetically pleasing green color to blend in with the natural surroundings. A second bridge included a 70 ft. single-span bridge to replace a failing two-span pedestrian bridge. Stoffer Plaza, where the farmer's market is held, was also reconfigured.

The entire project was designed in accordance with AASHTO's Guide for the Development of Bicycle Facilities including horizontal alignment and clearances, vertical alignment, permanent signs, and pavement markings.

WIGHTMAN & ASSOCIATES, INC.

References

Municipal Client List

Albion, City of	Mr. Jim Lenardson, Director of Public Services	517-629-7200
Allegan County Road Commission	Mr. Larry W. Brown, Managing Director	269-673-2184
Allegan County Drain Commissioner	Ms. Denise Medemar, Drain Commissioner	269-673-0440
Antwerp Township	Mr. Daniel Ruzick, Supervisor	269-668-2615 ext. 215
Bangor, City of	Ms. Regina Hoover, City Manager	269-427-5831
Baroda Township	Mr. Jim Brow, Supervisor	269-266-2097
*Baroda, Village of	Mr. Robert Getz, President	269-422-1779
Battle Creek Unlimited	Mr. Joe Sobieralski, President and CEO	269-962-7526
Berrien County Drain Commission	Mr. Roger Zilke, Drain Commissioner	269-982-8633
*Berrien County Road Commission	Mr. Brian Berndt, P.E., County Highway Engineer	269-925-1196
Berrien County	Mr. William Wolf, Administrator	269-983-7111
Branch County Road Commission	Mr. Trent Arver, Engineer/Manager	517-278-2022
*Bridgman, City of	Mr. Juan Ganum City Manager	269-465-5144
Buchanan, City of	Mr. Bill Marx, City Manager	269-695-3844
Calhoun County Road Department	Ms. Angela Kline, P.E., Director of Engineering	269-781-0038
*Calvin Township	Ms. Adrienne Glover, Supervisor	269-445-2537
*Cass County Board of Public Works	Mr. Robert Wagel, Chairman	269-782-6111
*Cassopolis Area Utility Authority	Mr. Gene Decker, Chairman	269-445-2174
*Cassopolis, Village of	Ms. Emilie Sarratore, Village Manager	269-445-8648
Coloma Charter Township	Mr. Ken Parrigin, Supervisor	269-468-7212
Comstock Charter Township	Ms. Jodi Stefforia, Planner	269-381-2360
Covert Township	Mr. Dennis Palgen, Supervisor	269-764-8986
*Decatur, Village of	Mr. Aaron Mitchell, Village Manager	269-423-6114
*Dowagiac, City of	Mr. Jim Bradford, Director of Public Services	269-782-2195
Eau Claire, Village of	Ms. Virginia Gonzalez, Village President	269-461-6173
*Edwardsburg, Village of	Mr. Jacque Tighe, President	269-663-8484
*Galien, Village of	Mr. Clarence Marsh, President	269-545-3647
*Gobles, City of	Mr. Richard Vreeland, Dir. Of Public Works	269-628-5370
Gull Lake Sewer and Water Authority	Mr. Richard Pierson, Director	269-731-4595
*Hartford, City of	Mr. Yemi Akinwale, City Manager	269-621-2477
Hillsdale County Road Commission	Mr. John Sanders, Manager	517-437-4458
Howard Township	Mr. Craig Bradfield, Supervisor	269-684-0072
*Jefferson Township	Mr. Jeff Carmen, Supervisor	269-445-3941
Kalamazoo, City of	Mr. James Baker, P.E., Dir. of Public Services	269-337-8768
Keeler Township	Mr. William Kays, Supervisor	269-621-3604
Kentwood, City of	Mr. Dan VanderHeide, P.E., Assistant City Engineer	616-554-0740
*Lakes Area Sewer Authority	Mr. Gerald Melko, Chairman	269-646-3207
Lawrence, Village of	Mr. Dan Faulkner, Manager	269-325-8165
*Lawton, Village of	Mr. Mike Grabbe, Superintendent of Public Works	269-624-6406
*Marcellus Township	Mr. John Grib, Former Supervisor	269-794-6333
*Marcellus, Village of	Ms. Krista Jourdan, Clerk/Manager	269-646-5485
*Martin, Village of	Mr. Don Flower, Trustee	269-672-7777
*Mason Township	Mr. John Brandt, Supervisor	269-641-5923

References

*New Buffalo Township	Ms. Michelle Heit Supervisor	269-469-1101
Nottawaseppi Huron Band of the Potawatomi Indians	Mr. Dan Green, Executive Planner	269-729-5151
*Ontwa Township	Mr. Jerry Marchetti, Supervisor	269-663-2347
*Oronoko Charter Township	Mr. Mike Hildebrand, Supervisor	269-471-2824
Paw Paw, Village of	Mr. Larry Nielsen, Village Manager	269-657-3148
*Penn Township	Mr. Richard Mickey, Supervisor	269-506-6166
Plainwell, City of	Mr. Erik Wilson, City Manager	269-685-6821
*Pokagon Band of Potawatomi Indians	Mr. Mike Phelan, General Counsel	269-783-0970
Pokagon Township	Mr. John Warren, Chairperson	
	Ms. Linda Preston, Supervisor	269-782-8756
*Portage, City of	Mr. Chris Barnes, P.E., Dir. of Transportation & Utilities	269-324-9256
Porter Township, Cass County	Mr. Dan Harvey, Supervisor	269-317-4360
Porter Township, Van Buren County	Mr. Chris Oxley, Supervisor	269-624-4022
Road Commission of Kal. County	Mr. Ryan Minkus, P.E., County Engineer	269-381-3171
Schoolcraft Township	Mr. Don Ulsh, Supervisor	269-649-1276
Schoolcraft, Village of	Ms. Cheri Lutz, Manager	269-679-4304
*Silver Creek Township	Mr. Bill Saunders, Supervisor	269-424-3025
*Sister Lakes Utilities Authority	Mr. William Kays, Chairman	269-621-3604
South County Sewer & Water Authority	Mr. Richard Pierson, Director	269-998-4587
Springfield, City of	Mr. Tom Matson, Director of Public Services	269-965-2354
St. Joseph Charter Township	Ms. Denise Cook, Manager	269-429-7703
Sturgis, City of	Mr. Andrew Kuk, Assistant City Manager	269-689-9421
Sylvan Twshp/ST Water & Sewer Authority	Mr. Mike Jurosek, Director	734-475-8890
*SW Mich. Regional Sanitary Sewer & Water Authority	Mr. Steve Tilly, Chairman	269-429-2501
*Three Oaks Township	Mr. Charles Sittig, Supervisor	269-756-9801
Three Rivers, City of	Ms. Amy Roth, P.E., Public Services Director	269-273-1845
Van Buren County Road Commission	Mr. Larry B. Hummel, P.E., Engineer-Manager	269-674-8011
*Vandalia, Village of	Ms. Beverly Young, President	269-476-2344
Vicksburg, Village of	Ms. Kathleen Hoyle, DDA Director	269-352-4583
Watervliet Charter Township	Mr. Dan Hutchins, Supervisor	269-463-5113
*Watervliet, City of	Mr. Dave Brinker, Mayor	269-463-6769
Wayland, City of	Mr. Tim McLean, City Manager	269-792-2265
Wayne Township, Cass County	Mr. Frank Butts, Supervisor	269-782-5250

* Denotes WAI clients of 10+ years

THANK YOU BARRY COUNTY

“WE BELIEVE PEOPLE FLOURISH WHEN THEY PARTNER
WITH A DYNAMIC TEAM OF PROBLEM SOLVERS”



WIGHTMAN & ASSOCIATES, INC.

1000 W. STATE ST. | SUITE 100 | BLOOMINGTON, IL 61710 | TEL: (309) 343-1100 | FAX: (309) 343-1101

PROJECT CONTACTS

BEN BAKER

bbaker@wightman-assoc.com

(269) 487-9611



Wightman & Associates, Inc.