

NOTICE OF ZONING ORDINANCE ADOPTION

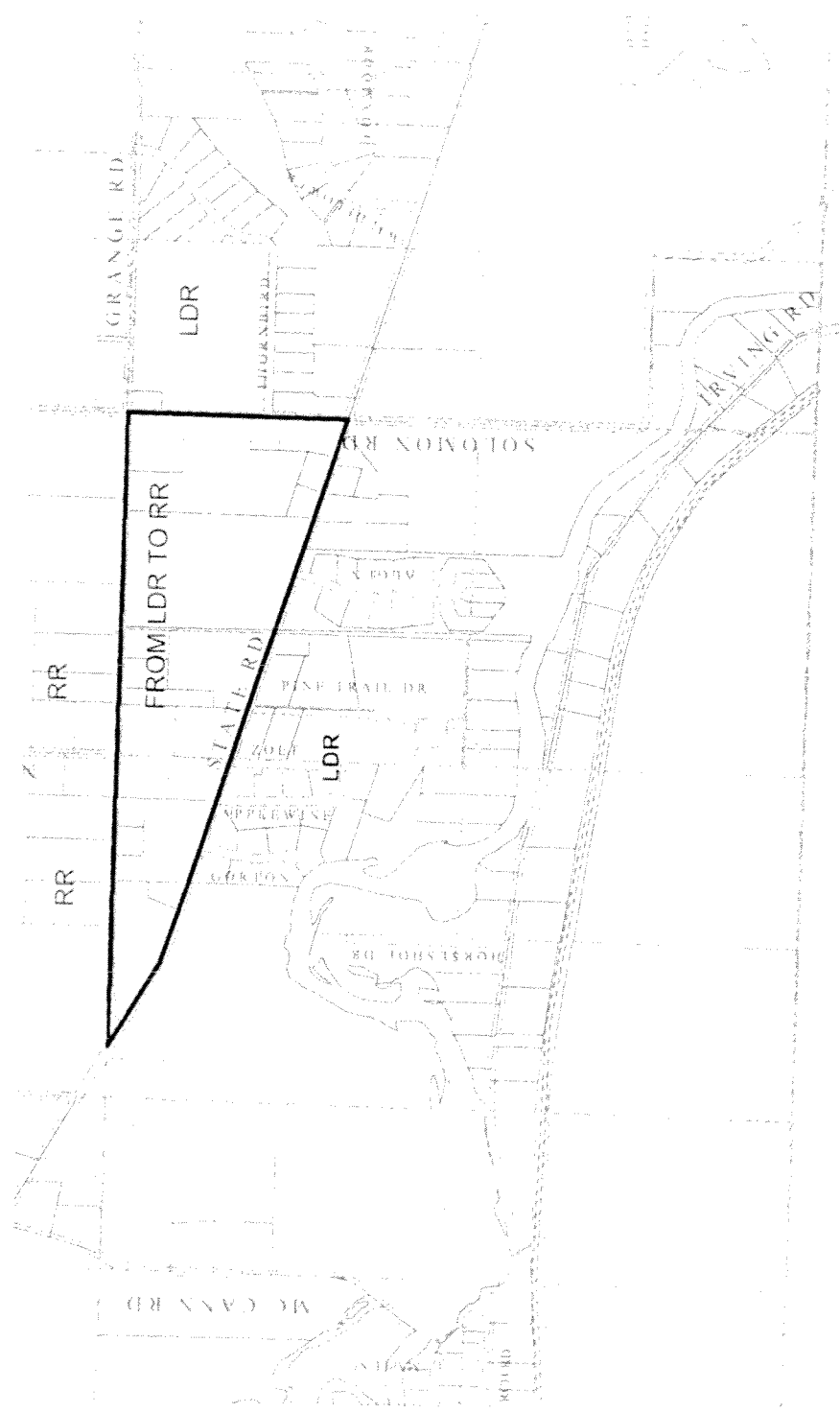
Pursuant to the provisions of Public Act 110 of 2006, as amended, notice is hereby given that the Barry County Board of Commissioners has adopted the following Ordinance which amends the Barry County Zoning Ordinance of 2008 in the following manner:

The Zoning District Map has been amended as follows:

ORDINANCE NO.: A-2-2016

This map is a portion of the Official Zoning Map of Irving Twp., of Barry County, Michigan.

FROM LDR (Low Density Residential) to RR (Rural Residential) – Bolded Area



All of the above mentioned property is located in Barry County, Michigan.

Begin at the NE corner of Section 32; the westerly along the North Section line of Section 32 until it intersects with the c/l of State Road; the SEly along said c/l to the east section line of Section 32; the North along the east section line of Section 32 to the POB.

The above named ordinance becomes effective July 1, 2016. Copies of this ordinance are available for purchase or inspection in the Barry County Planning Office at 220 W. State St., Hastings, Michigan between the hours 8:00 A.M. – 5:00 P.M. (closed between 12-1 p.m.), Monday thru Friday. Please call (269)945-1290 for further information.

Date June 14, 2016

Craig A. Stolsonburg

Craig Stolsonburg, Chairperson
Barry County Board of Commissioners

Pamela A. Palmer

Pamela A. Palmer, Barry County Clerk