

NOTICE OF ZONING ORDINANCE ADOPTION

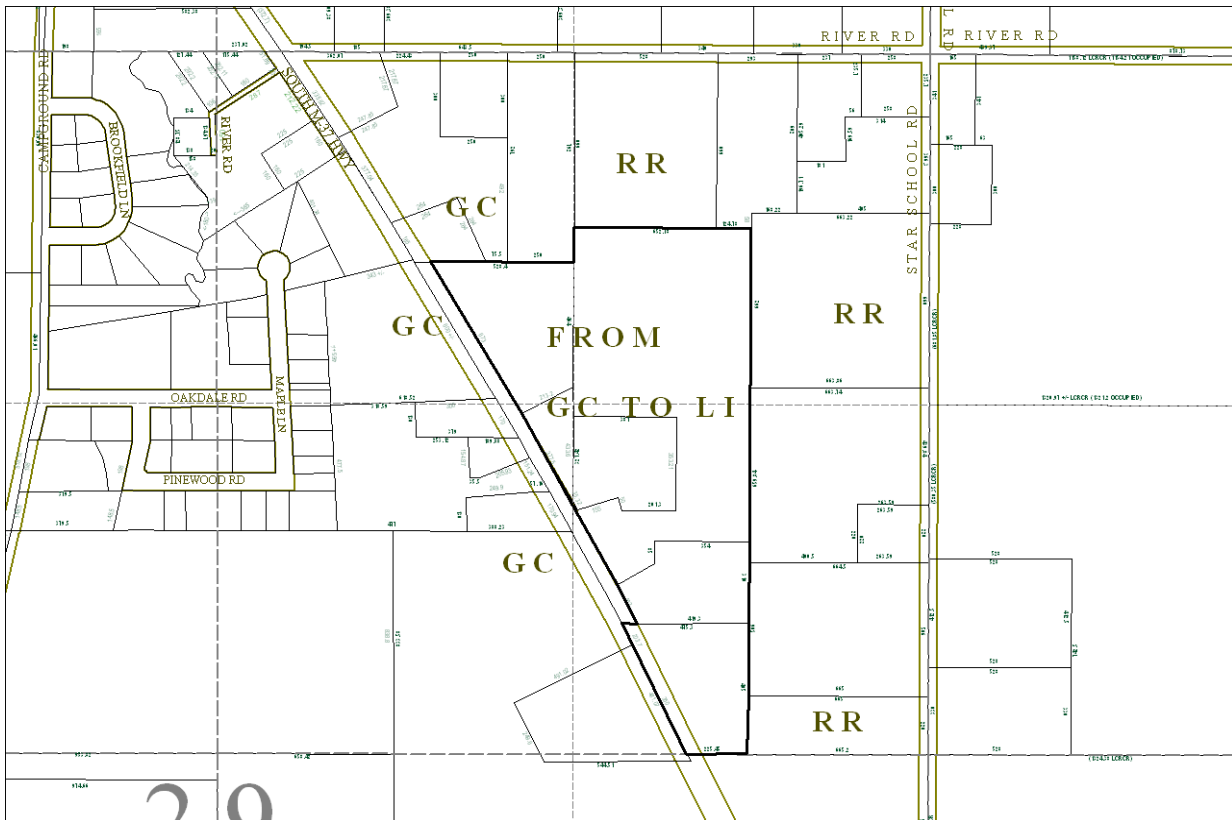
Pursuant to the provisions of Public Act 110 of 2006, as amended, notice is hereby given that the Barry County Board of Commissioners has adopted the following Ordinance which amends the Barry County Zoning Ordinance of 2008 in the following manner:

The Zoning District Map has been amended as follows:

ORDINANCE NO.: A-2-2013

This map is a portion of the Official Zoning Map of Hastings Charter Township, Barry County, Michigan.

FROM GC (General Commercial) to LI (Light Industrial) – Outlined area



All of the above mentioned property is located in Barry County, Michigan.

Legal Description:

Beg at a point on the E-W $\frac{1}{4}$ line lying 665.20 ft S 89 Deg W of the E $\frac{1}{4}$ post of Section 29, T3N, R8W, th S 89 Deg W 225.45 ft, th N 26 Deg 38" W 553.70 ft, th E 50 ft, th N 26 Deg 38" W 163 ft, th NW'ly along E line of M-37 Hwy 355.32 ft, th NW'ly along said line 377.5 ft, th NW'ly along said line 673 ft, th E 528.4 ft, th N 132 ft, th E 652.78 ft, th S'y to the E-W $\frac{1}{4}$ line of Section 29 to POB.

The above named ordinance becomes effective April 25, 2013. Copies of this ordinance is available for purchase or inspection in the Barry County Planning Office at 220 W. State St., Hastings, Michigan between the hours 8:00 A.M. - 5 P.M. (closed between 12-1 p.m.), Monday thru Friday. Please call (269)945-1290 for further information.

Date April 9, 2013

Craig Stolsonburg, Chairperson
Barry County Board of Commissioners

Pamela A. Jarvis, Barry County Clerk