

NOTICE OF ZONING ORDINANCE ADOPTION

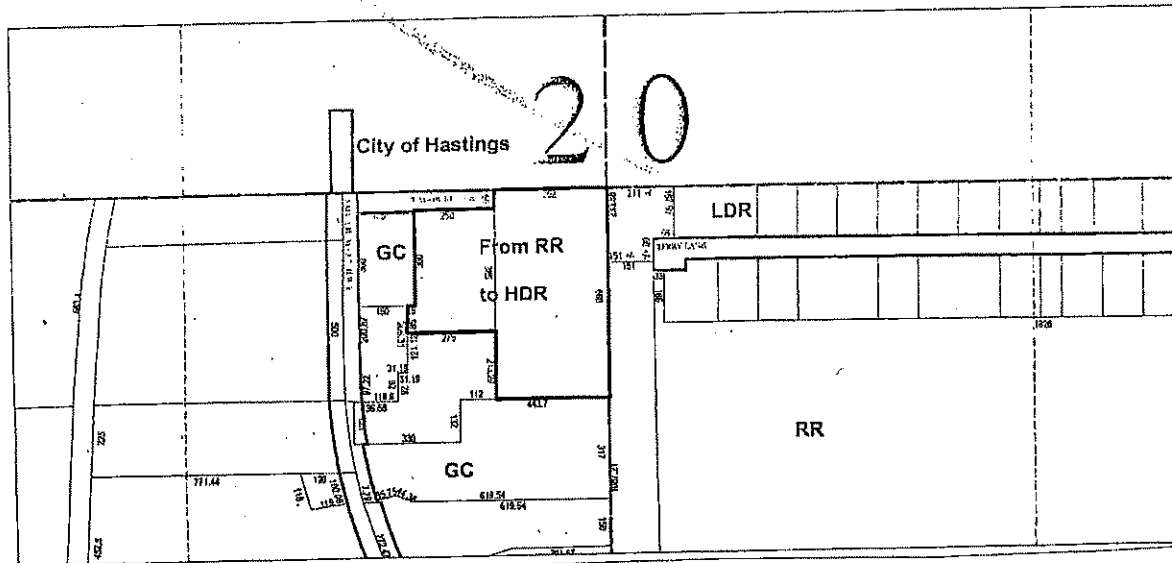
Pursuant to the provisions of Public Act 110-of 2006, as amended, notice is hereby given that the Barry County Board of Commissioners has adopted the following Ordinance which amends the Barry County Zoning Ordinance of 2008 in the following manner:

The Zoning District Map has been amended as follows:

ORDINANCE NO: A-1-2017

From RR (Rural Residential) to HDR (High Density Residential) -
(450 Meadow Run in Section 20)

This map is a portion of the Official Zoning Map of Hastings Township in Barry County, Michigan.



Legal Description:

Begin at the center post of Section 20 of Hastings Township; the west 352 feet, the south 60 feet, the west 250 feet, the south 300 feet, the west 25 feet, the south 85 feet, the east 275 feet, the south 213.29 feet, the east 352 feet, the north 660 feet to POB.

February 17, 2017
Date _____

Ben Geiger, Chairperson
Barry County Board of Commissioners

Pamela A. Palmer, Clerk
Barry County

February 23, 2017
Published Date: _____

The above named ordinance becomes effective **March 3, 2017**. Copy of this ordinance is available for purchase or inspection in the Barry County Planning Office at 220 W. State St., Hastings, Michigan between the hours 8:00 A.M. - 5 P.M. (closed between 12-1 p.m.), Monday thru Friday. Please call (269)945-1290 for further information.